

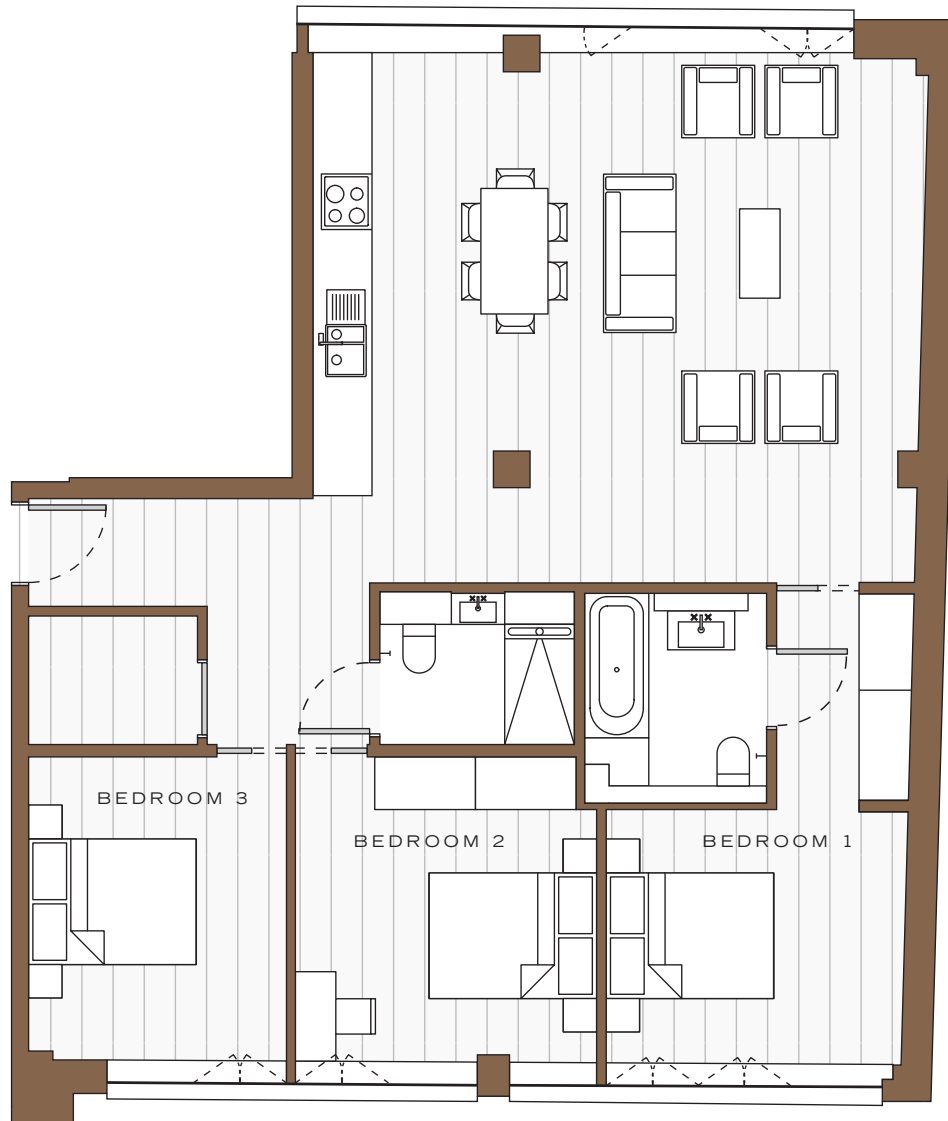
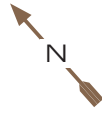
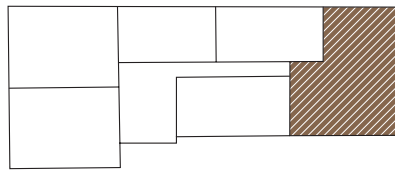
**205**

**ASTA HOUSE.**  
FITZROVIA W1

# 205

**3 BEDROOMS**  
**2 BATHROOMS**  
**108.3 SQ M**  
**(1,166 SQ FT)**

- Kitchen by Molteni Dada with a white matt lacquer finish and corian worktop
- Appliances by Miele and Siemens
- Open plan living and dining area
- Master bedroom with en suite master shower/bath room and dressing area
- Guest bedrooms with guest shower room
- Underfloor heating and comfort cooling



LIVING ROOM	7.3 x 6.3M
BEDROOM 1	3.6 x 3.1M
BEDROOM 2	3.6 x 3.7M
BEDROOM 3	3.1 x 3.6M

65  
WHITFIELD STREET.  
FITZROVIA W1.

MISREPRESENTATION ACT

These particulars are prepared for the guidance of prospective owners, tenants and occupants. They are intended to give a fair overall description of the property but are not intended to constitute part of an offer or contract. Any information contained herein (whether in the text, plans, CGIs or photographs) is given in good faith and should not be relied upon as being a statement or representation of fact. Any areas, measurements or distances referred to herein are approximate only. Descriptions of a property are inevitably subjective and the descriptions contained herein are used in good faith as opinion and not by way of statement or fact. Neither Derwent London plc nor any of its subsidiaries or employees have any authority to make or give warranty whatever in relation to this property.

February 2018

DERWENT  
LONDON