

LINCOLN SQUARE

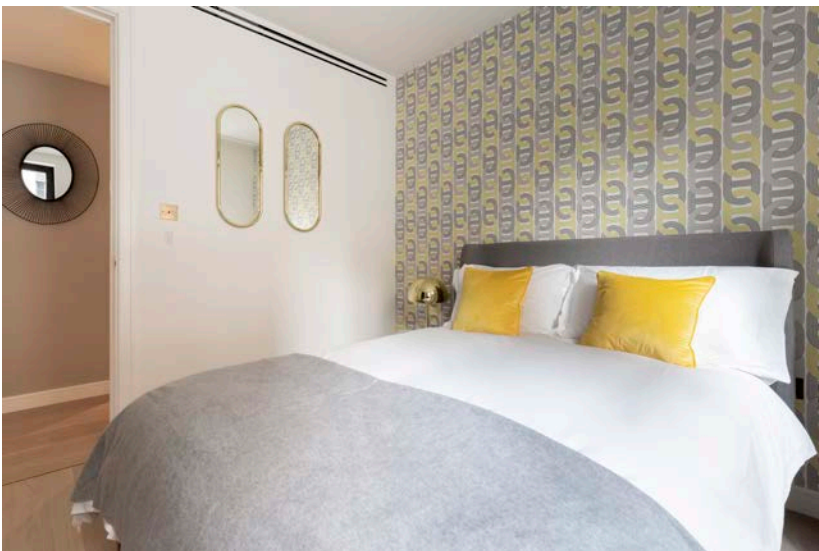
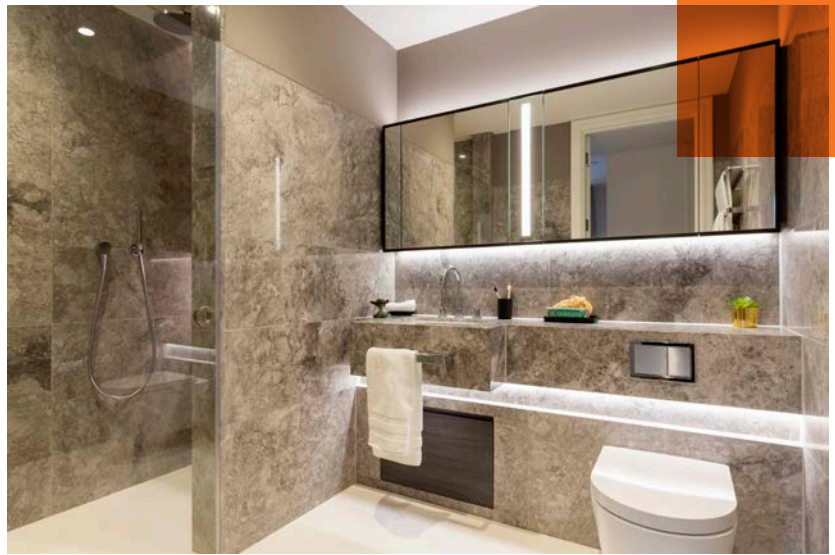
LODHA



£1,600,000

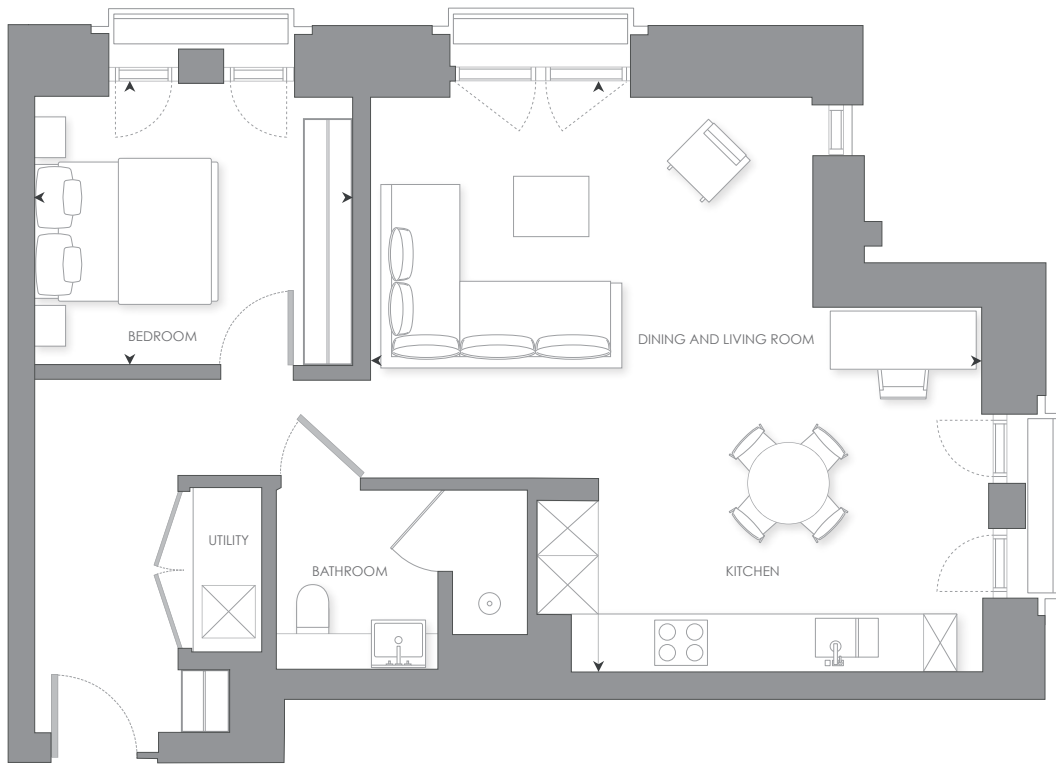
lincolnsquare.co.uk

THE INTERIORS

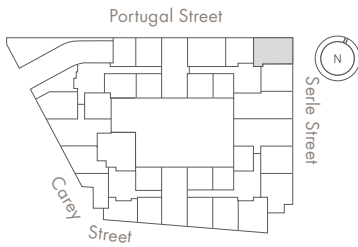


N.3

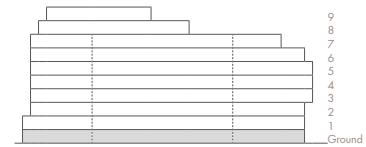
1 BEDROOM



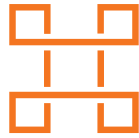
GROUND FLOOR



ELEVATION



INTERNAL AREA	65 sq m	701 sq ft	- Dual aspect
LIVING ROOM/DINING/KITCHEN	6.79 x 6.55 m	22' 3" x 21' 6"	- Master bedroom area with fitted wardrobe
BEDROOM 1	3.58 x 3.17 m	11' 8" x 10' 4"	- Additional hanging space in the hallway
			- Floor to ceiling windows



LINCOLN SQUARE

LODHA



CONTACT DETAILS

LODHA UK

Lodha UK is an established London-based development company with a strong in-house development team with capabilities in planning, design and procurement, as well as marketing, sales and customer support. Lodha UK is the development subsidiary of Lodha Group, a multinational premium real estate developer with a tradition of creating world-class developments.

Show apartment at:
Lincoln Square
18 Portugal Street
WC2A 2AT

Lodha Developers UK Ltd.
3 St. James's Square
SW1Y 4JU
Tel: +44 20 7004 0910